

2020 FOCUS BRIEF on the World's Poor and Hungry People

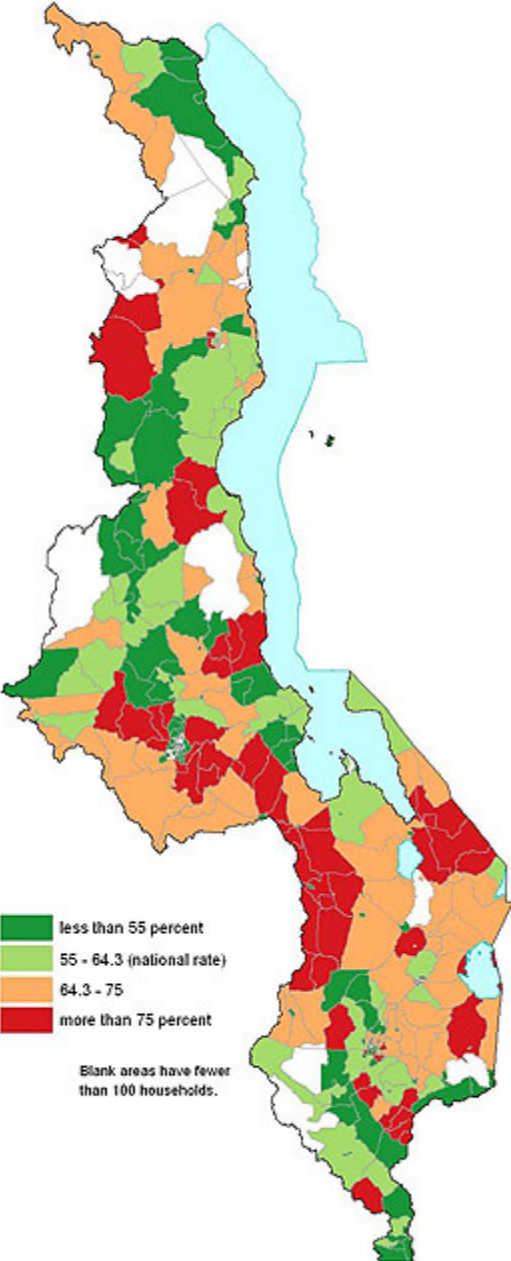
October 2007

MAPPING WHERE THE POOR LIVE

Todd Benson, Michael Epprecht, and Nicholas Minot

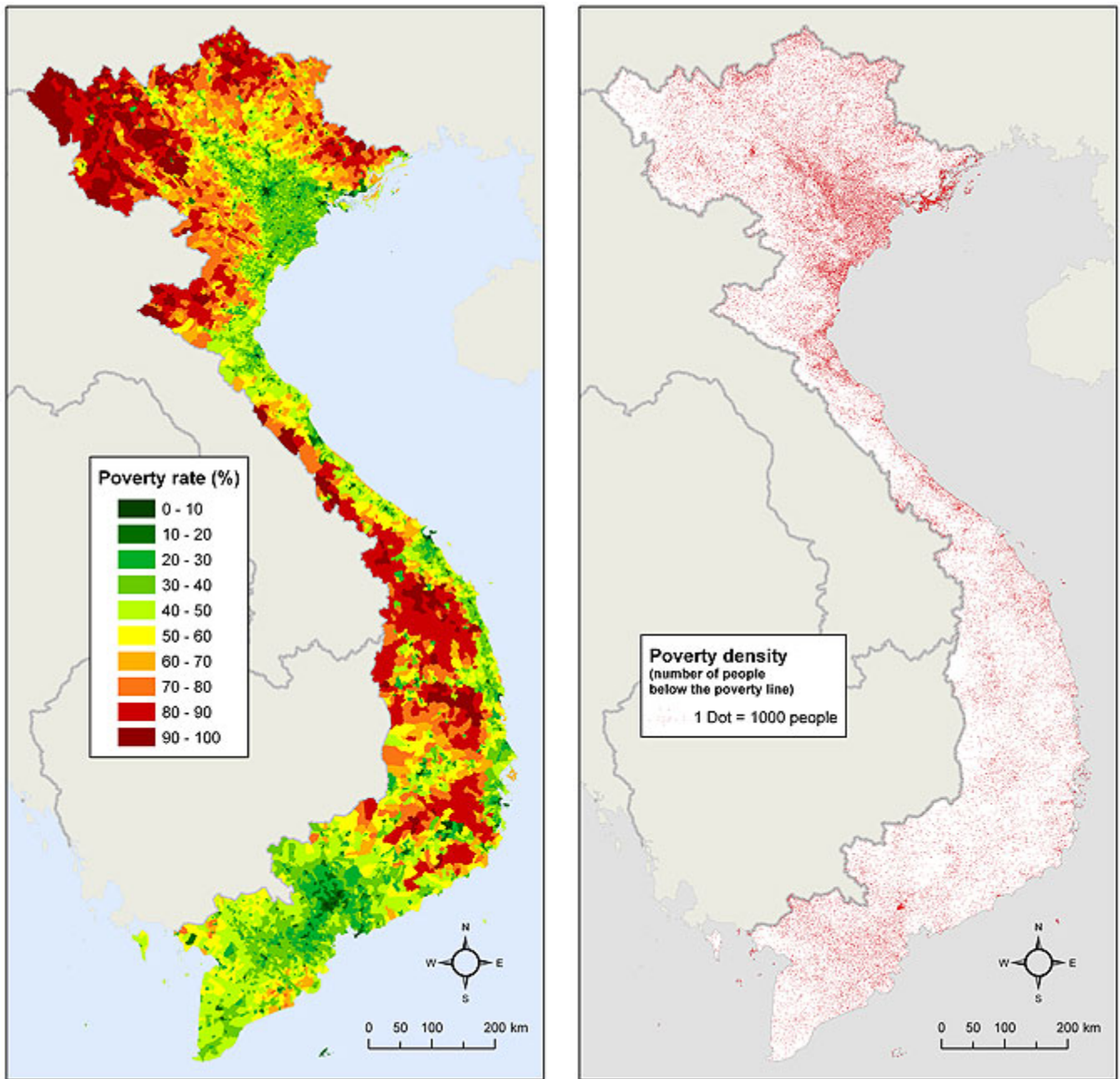
Color versions of maps

Figure 1—Malawi: Poverty Headcount at Traditional Authority Level, 1997–98



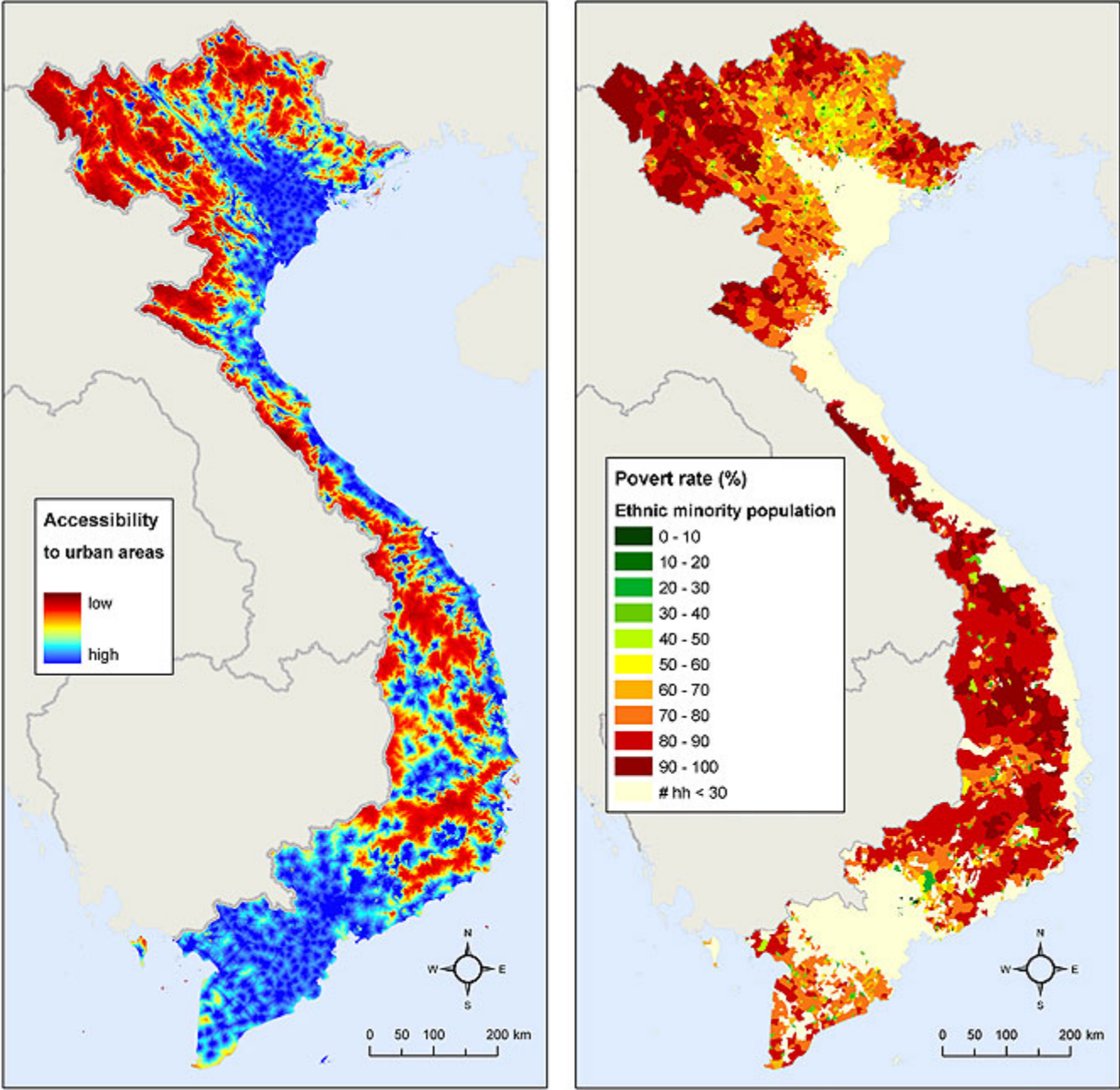
Source: T. Benson with J. Kaphuka, S. Kanyanda, and R. Chinula. 2002. *Malawi: An Atlas of Social Statistics*. Washington, DC, and Zomba, Malawi: IFPRI and National Statistical Office.

Figure 2—Vietnam: Poverty Headcount at Commune Level and Density of Poverty, 1999



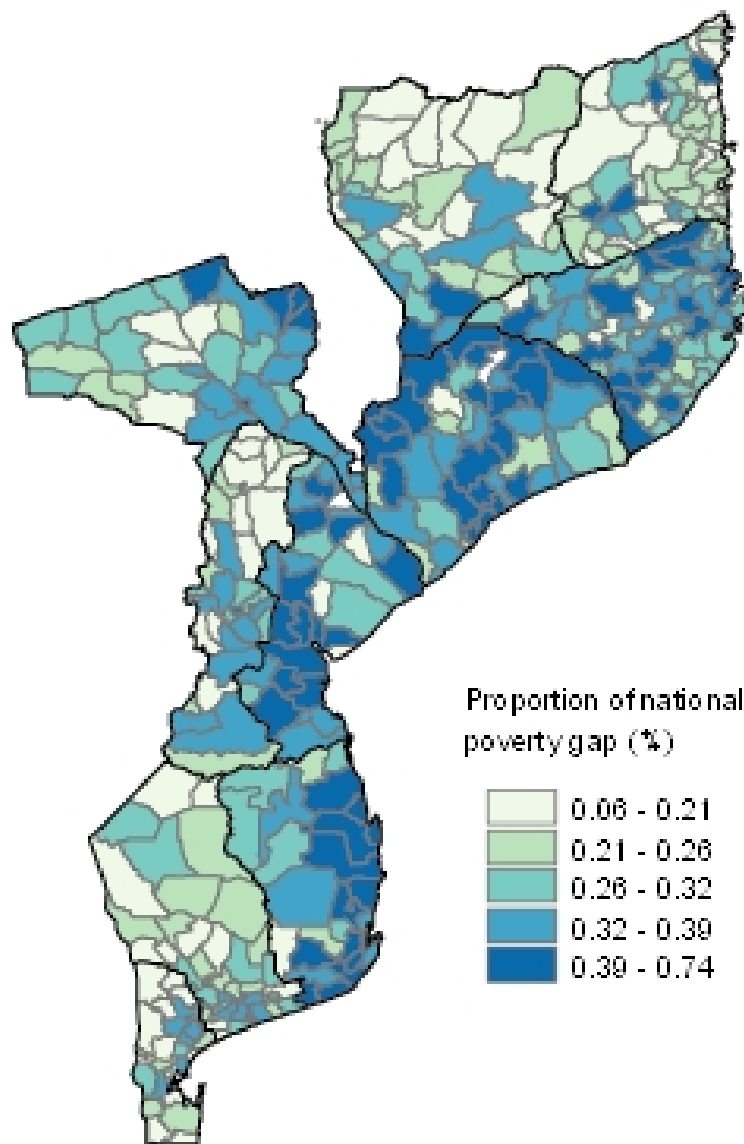
Source: M. Epprecht and A. Heinemann, eds. 2004. *Socioeconomic Atlas of Vietnam: A Depiction of the 1999 Population and Housing Census*. Berne: Swiss National Centre of Competence in Research (NCCR) North-South, University of Berne.

Figure 3—Vietnam: Accessibility to Urban Areas and Poverty Headcount of Ethnic Minorities at Commune Level, 1999



Source: M. Epprecht and A. Heinemann, eds. 2004. *Socioeconomic Atlas of Vietnam: A Depiction of the 1999 Population and Housing Census*. Berne: Swiss National Centre of Competence in Research (NCCR) North-South, University of Berne.

Figure 4—Mozambique: Percentage of Total Poverty Gap by Administrative Post, 1996–97 (\$2.3 million/day)



Source: K. R. Simler and V. Nhate. 2005. *Poverty, Inequality, and Geographic Targeting: Evidence from Small-Area Estimates in Mozambique*. Food Consumption and Nutrition Discussion Paper No. 192, Washington, DC: IFPRI.